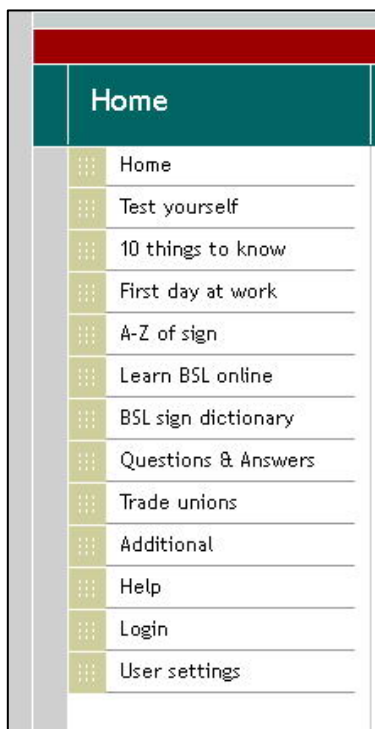
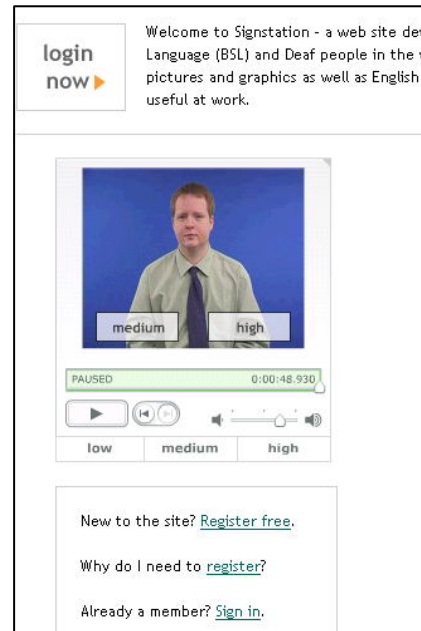


SignStation Profile – www.signstation.org

SignStation – a web site devoted to those people who want to know more about British Sign Language (BSL) and Deaf¹ people in the workplace. In this site, you will find video, interactive exercises, pictures and graphics as well as English explanations of many of the features of sign language which will be useful at work.

When you start in SignStation you will find that the text can be made bigger or smaller and all the video can be played at high medium or low quality depending on your connection. When you login the system remembers your preferences and allows you to search for video of signs,

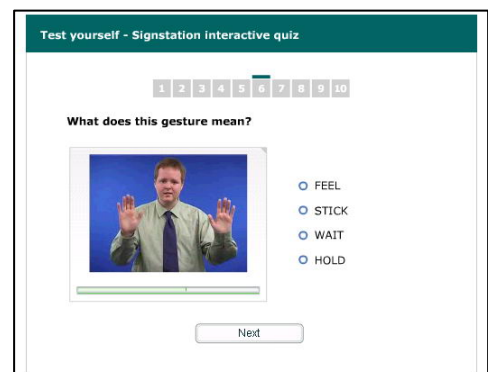


SignStation is a resource which will be useful for employees and colleagues of Deaf people managers of Deaf workers human resource and training staff those who deal with Deaf customers Trade union organisers, safety at work representatives, Disability Officers

There are many different components of SignStation designed to address a range of issues at a number of levels. The left hand menus give you direct access to different areas of knowledge

These include the interactive quiz to find out where you should start. In the quiz you have questions about

working with Deaf people and about sign language. There are also video items. When you finish you have feedback on your score and a suggestion about which part of the website you should look at.



¹ Deaf with a capital 'd' refers to those people who are members of the Deaf community in the UK and who use British Sign Language.

For people in a hurry there is a section containing the 10 most important things you need to know There are versions of this for fellow workers, for managers, for personnel staff & trainers and for those who have Deaf customers.

10 things you need to know about Deaf People and sign language.

[1](#) | [2](#) | [3](#) | [4](#) | [5](#) | [6](#) | [7](#) | [8](#) | [9](#) | [10](#)

1

Deaf People

Deaf people (Deaf with a capital D like British with a capital B - to mean belonging to the community) are members of the Deaf Community in the UK. The community is centred on Deaf clubs which exist in every town and city in the UK. They are different from hard-of hearing people or people who have lost their hearing because Deaf people use their own sign language (rather than spoken language).

2

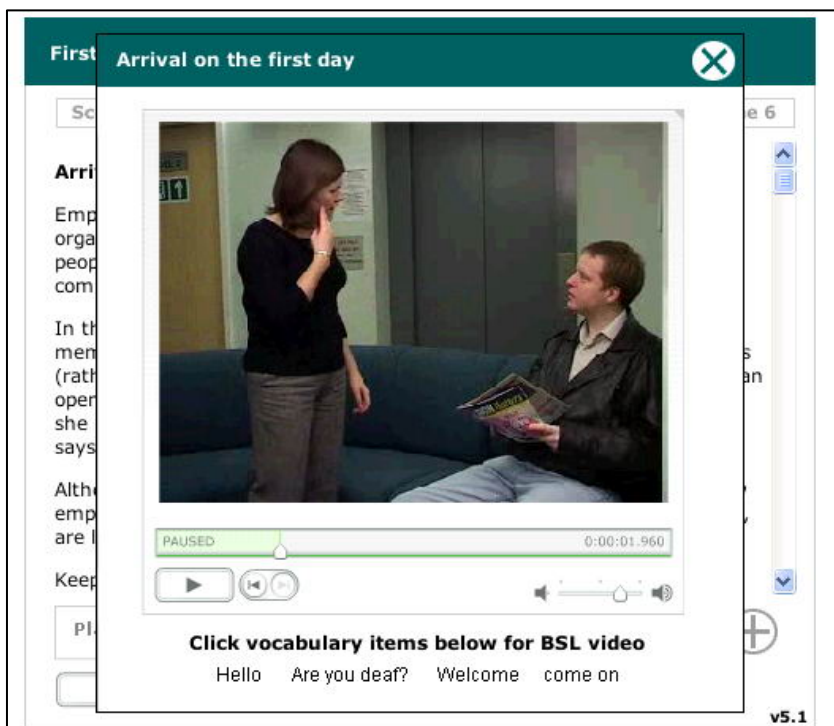
Language

Deaf people use sign language - more accurately, British Sign Language or just BSL, which has a different structure to English - it is not English on the hands. Finger-spelling is used to represent specific English words when needed. In fact in BSL, the face, the body and the hands are all equally important; Deaf people watch the face when signing, not the hands. BSL is different to other sign languages (eg American Sign Language and French Sign Language) and has been known to exist for over 400 years in the UK.

3

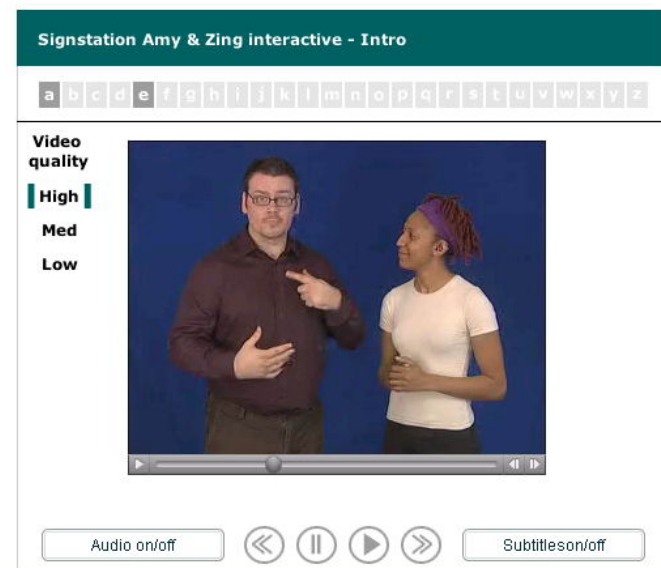
English

Everything that can be said in English can also be signed. It is a recognised language and will serve the purpose of all members of the Deaf community. Some Deaf people can use both languages - English (usually written) and BSL - but they may use the English better in some contexts rather than others - not because Deaf people are unintelligent, but because they have had limited access to education.



Faced with the situation of a Deaf person coming to work with you for the first time, we have prepared a brief guide with some useful signs. First day at work has 6 scenarios with explanations and basic vocabulary for communicating at work. We are working on an additional version of this which will show how to deal with Deaf customers and again it provides an explanation and some simple vocabulary in BSL.

Sometimes we forget that Deaf people are the experts in sign language and so we have turned to Amy and Zing to have the whole thing explained to us. In this section, two Deaf people explain what sign language is and why it is so important. They illustrate with examples. The whole video programme is about 50 minutes in length but is broken down into neat sections for viewing – an A-Z of sign language. This can also be obtained from the project team as a standalone DVD for use in training.



Some people want to go further and want to learn how to communicate with Deaf people properly. SignStation has a full length sign language video course. “The Company” is a teach yourself BSL course based on the theme of a Deaf Design and Building company. Using a storyline of a young Deaf person joining the company and working through to a full scale, on-site building project, the videos show dialogues of increasing complexity.

The screenshot shows the SignStation interface. At the top, there are tabs for Dialogue, Grammar, Remarks, Exercises, and Vocabulary. The Dialogue tab is active, showing a video of two women in an office setting. Below the video, there are grammar explanations and a list of related terms. The dialogue text is as follows:

Manager: You mean the ground floor?
CAD: Yes, only the ground floor only.
Manager: In ground floor, there should be 500 sq metres. In first floor there will be two spaces. One is for architect office and another is for dentist lab. Both lifts will be in same place as there is in the ground floor. In the second floor, there will be two large apartments. Do you understand? When can you start drawings?
CAD: I have lots of works coming up but I can do it on Tuesday and Thursday.
Manager: I just realised, did you put the drawings plans for Kings Avenue on

Below the dialogue, there are grammar explanations: LX-LOC ALTOGETHER / HOW-MANY SQUARE METRE / YOU MEAN GROUND FLOOR / GROUND FLOOR ONLY / **GROUND FLOOR ALTOGETHER** / 500 SQUARE METRE / LX-LOC NEXT FIRST FLOOR / LX-LOC TWO FLAT SPACES / DENTIST L-A-B MAKE TEETH / LX-LOC BEHIND / ARCHITECTURE OFFICE / LX-LOC RIGHT-SIDE LEFT-SIDE / SAME FLOOR BOTH HAVE LIFT / CAN ACCESS BOTH / NEXT LX-LOC SECOND FLOOR / LARGE TWO FLAT AREA OK / YOU LX-LOC CLEAR OK / WHEN YOU NEW PLAN / DRAW CAN AGAIN LX-LOC /

With each dialogue there are illustrated grammar explanations, actual exercises for you to carry out (and which give you feedback) as well as further information on Deaf people and sign language. Like all language courses, there is also a vocabulary list which you can consult at any time and which you can compare with what is being signed in the dialogues. Altogether the course will take between 60 and 80 hours to complete. If you prefer, you can have a version of the whole course on DVD.

One of the key features of SignStation is the possibility to search for a sign and to back this up, we have created a full dictionary of BSL which can be accessed by text, or through a unique picture interface for different categories. By clicking on the objects in the picture, you can reach the corresponding sign. By the time we are finished there will be over 5,000 signs available online. And it is possible also to use the sign dictionary from a mobile phone.

The screenshot shows the SignStation dictionary interface for the word "Office". At the top, there are links for "Dictionaries" and "Picture dictionary". Below this, there is a text instruction: "Click on the items in the picture or the text, to see the sign video - scroll down the screen to see the whole picture." There are two images: a picture of an office desk with a computer, keyboard, and printer, and a video of a man signing. Below the video, there is a list of available signs: Alarm, Book, Keyboard, Lamp, Room, and Rubber. There are also links for different video sizes: small (56k modem), medium (broadband-medium), and large (broadband-large).

There is also a good deal more information in our questions and answer section. It deals with Deafness, sign language, Interpreters, History of Deaf people,

- Just want some quick answers? Try our [question and answer section](#).
- Feel confident with your BSL, watch the daily news on [Deaf Station](#).
- Trade union information in BSL...[click here](#).
- About [the project](#) which supports this resource site.
- [About us and partners](#)
- Even [more information](#)...

International aspects and new sections on the Disability Discrimination Act and on Access to Work are to be added.

There is a full guide to the use of sign language interpreters with over 20 sections on how to find interpreters, what they can do and how to get the most out of them.

There is a Trades Union section where there is information relevant to Deaf people who are or wish to be members of a Trade Union. There is also guidance for Trade Union officers who wish to work with Deaf people.

People who do have advanced skills in BSL are directed to the sister site – www.deafstation.org where everything is presented in BSL – starting from the international and national news (updated daily).

SignStation has been set up with the support of the Department for Work and Pensions under the BSL Initiatives (2004-5).

SignStation is approved by the Trades Union Congress (TUC).

Material for Sign Station has been created by a working partnership of

Independent Media Signing (IMS) Newcastle,
Deaf Studies Trust Bristol, SLIC Ltd Edinburgh,
Institut für Deutsche Gebärdensprache und Kommunikation Gehörloser (IDGS – Hamburg) with video production by Remark! London

And is coordinated by and based in the Centre for Deaf Studies, University of Bristol,

For further information

contact r.hills@bris.ac.uk; Tel: 0117 954 6900 fax 0117 954 6921; textphone: 0117 954 6920